



# RESTORING the Natural Process

## The Natural Process:

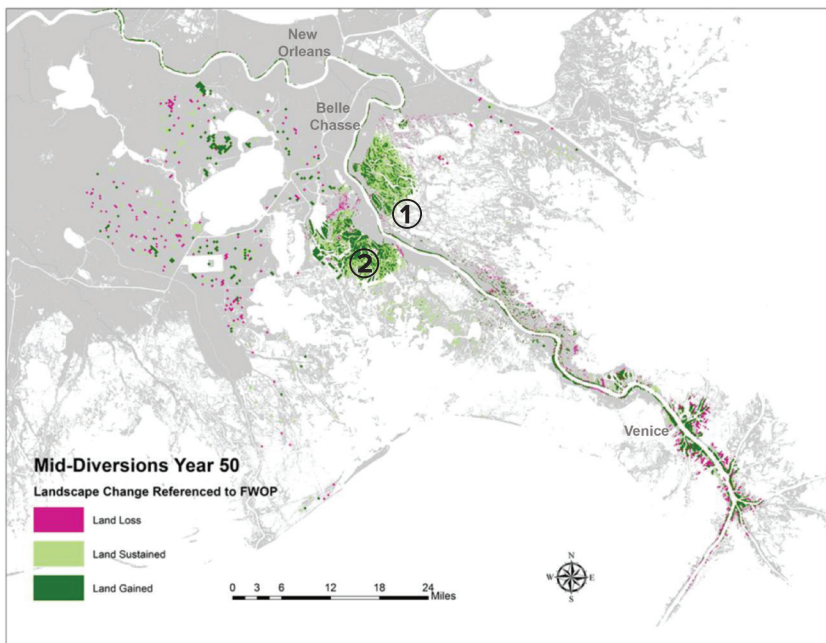
For 7,000 years, the Mississippi River deposited sediment from 31 states and two Canadian provinces across its coast, forming the land of southern Louisiana. Through regular flood events, the river would break through its natural levees, depositing sediment and laying the foundation for wetlands that help protect our communities.

## What Went Wrong:

Levees and flood-control structures were constructed along the Mississippi River to protect ports and communities, improve navigation and keep the river from changing course. These levees prevented the river from depositing sediment into its wetlands, contributing to our land-loss crisis and making our region vulnerable to flooding.

## Restoration Solution:

Restore the Mississippi River Delta has included two sediment diversions, that would capture some of this sediment and reroute it into our dying wetlands, in its list of priority restoration projects. Both projects are in the Engineering & Design phase and our organizations are working to get them into construction as quickly as possible with funding from the BP oil spill settlement.



1.

### Mid-Breton Sediment Diversion

This diversion (35,000 cfs maximum at peak river flow) in the Breton-Chandeleur Basin will be located along the east bank of the river, near Bertrandville.

2.

### Mid-Barataria Sediment Diversion

This diversion (75,000 cfs maximum at peak river flow) in the Barataria Basin will be located along the west bank of the river, near Myrtle Grove.

**Combined, these sediment diversions have the potential to build and maintain tens of thousands of acres.**

Land change by year 2070 with Mid-Diversions.

Credit: CPRA, The Water Institute of the Gulf

**WHO WE ARE** The Restore the Mississippi River Delta Coalition is working to protect people, wildlife and jobs by reconnecting the river with its wetlands. As our region faces the crisis of threatening land loss, we offer science-based solutions through a comprehensive approach to restoration. We are composed of conservation, policy, science and outreach experts from Environmental Defense Fund, National Audubon Society, the National Wildlife Federation, Coalition to Restore Coastal Louisiana and Lake Pontchartrain Basin Foundation.